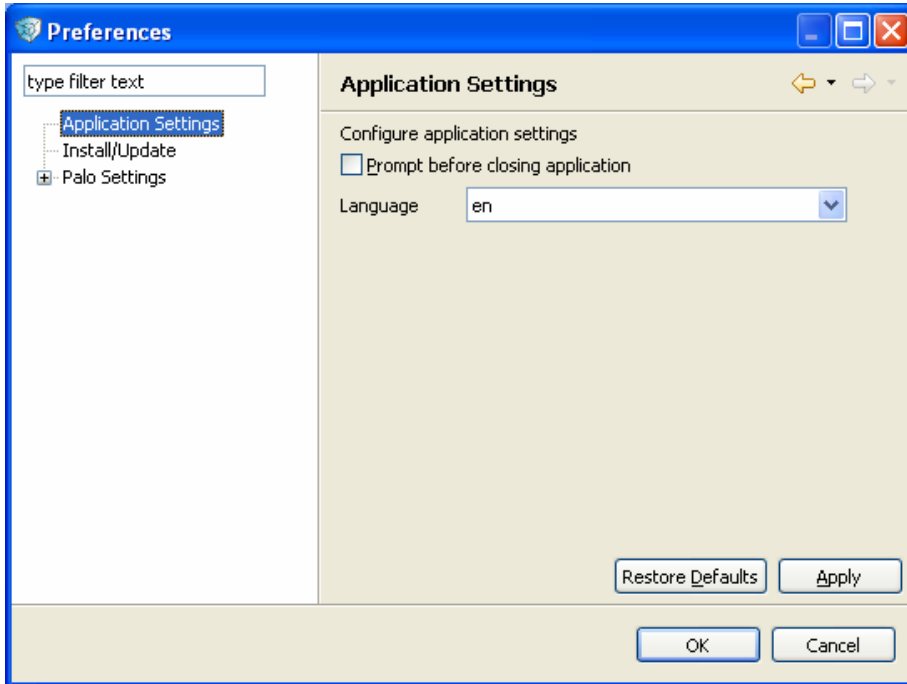
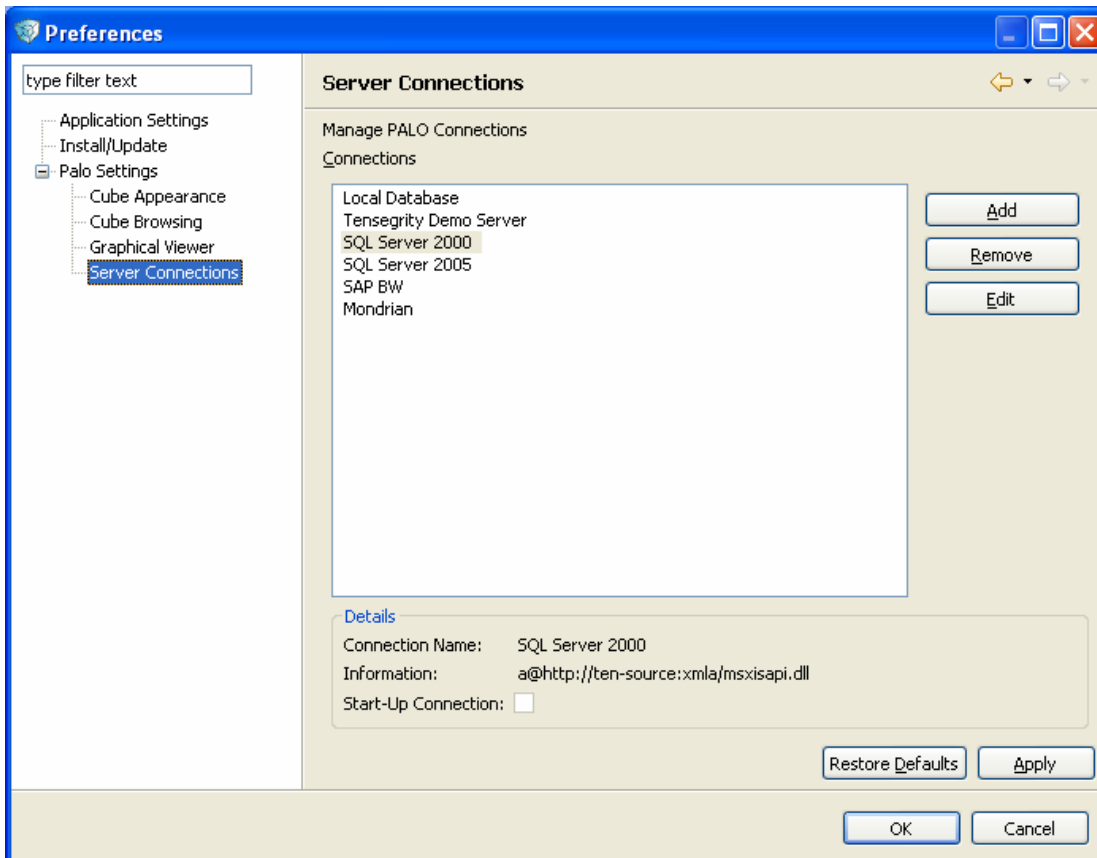


Connecting to XMLA data sources within the Palo Client

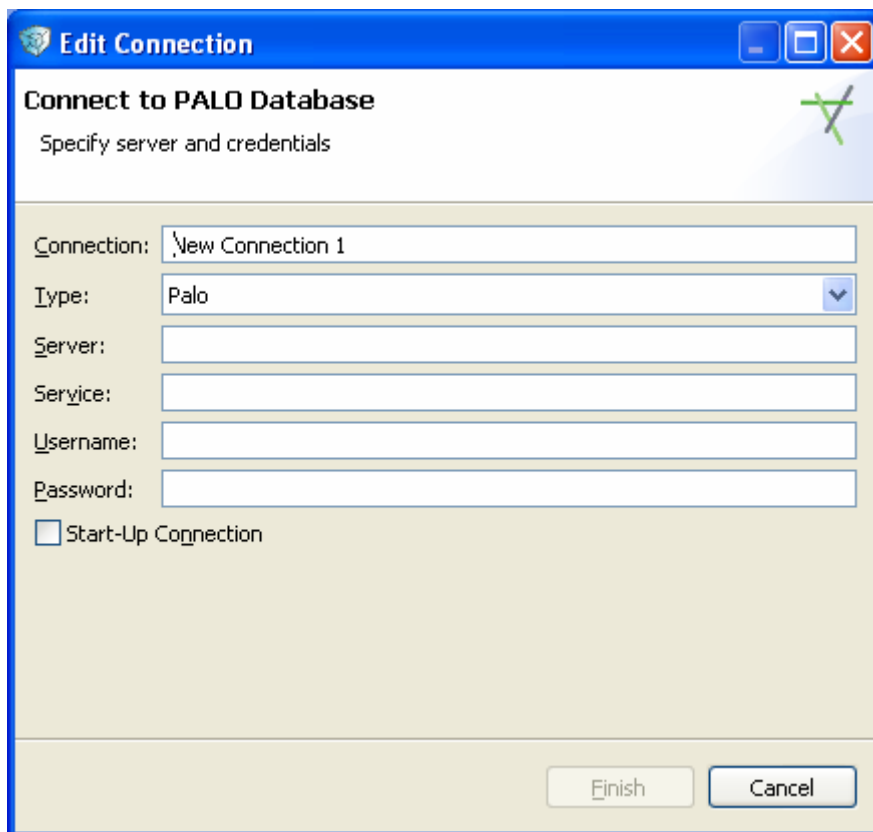
To connect to a XMLA data source, you have to create a new connection. This can be done by using the Preferences within the Window Menu. Select and execute the command and the following dialog will appear:



Open the Palo Settings Tree on the left and select the Server connection item in the tree. The following settings are now editable:



Now you can add a new Server Connection by clicking on the Add button. In the upcoming dialog you have to enter the access information for the new data source.



Connection:

The first item you have to enter is the connection name. This name can be chosen as desired and helps you to identify the connection later.

Type:

In the combo box below you have to select the type of connection. Select XMLA from the list, if you want to configure a XMLA data source.

Server

Then you have to enter the Server Name or IP-Address of the XMLA database. <http://localhost> would be entered for local installations of the server.

Service

The service depends on the source system. For MS Analysis services you have to enter the name of the virtual directory within IIS, where you installed XMLA, followed by a slash and the name of the library (DLL) that delivered the service.

Server Type	Service	Comment
Microsoft Analysis Services 2000	xmla/msxisapi.dll	(name of the virtual directory is 'xmla' plus the XMLA service DLL name, which is msxiapi.dll for MS AS 2000)
Microsoft Analysis Services 2005	olap/msmdpump.dll	(name of the virtual directory is 'olap' plus the XMLA service DLL name, which is msmdpump.dll for MS AS 2005)

SAP BW	sap/bw/xml/soap/xmla	Depending on installation
Mondrian	mondrian/xmla	Name of the tomcat web directory plus xmla

The username and password depend on your credentials. Even if there is no password and username, you have to enter a dummy user and password.

If you want to open the database every time Palo Starts, you can activate the 'Start-Up Connection' check box.

After you have edited the connection they are available for usage. Use File->Connect to Palo, F5 or click on the connect button and select the data source of your choice for viewing XMLA-data databases..